

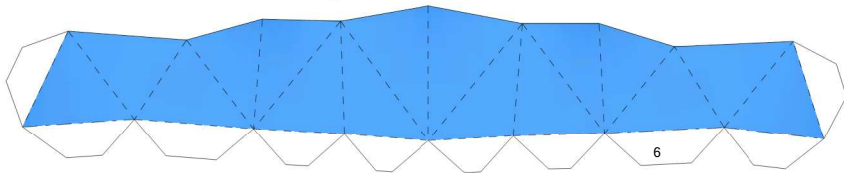
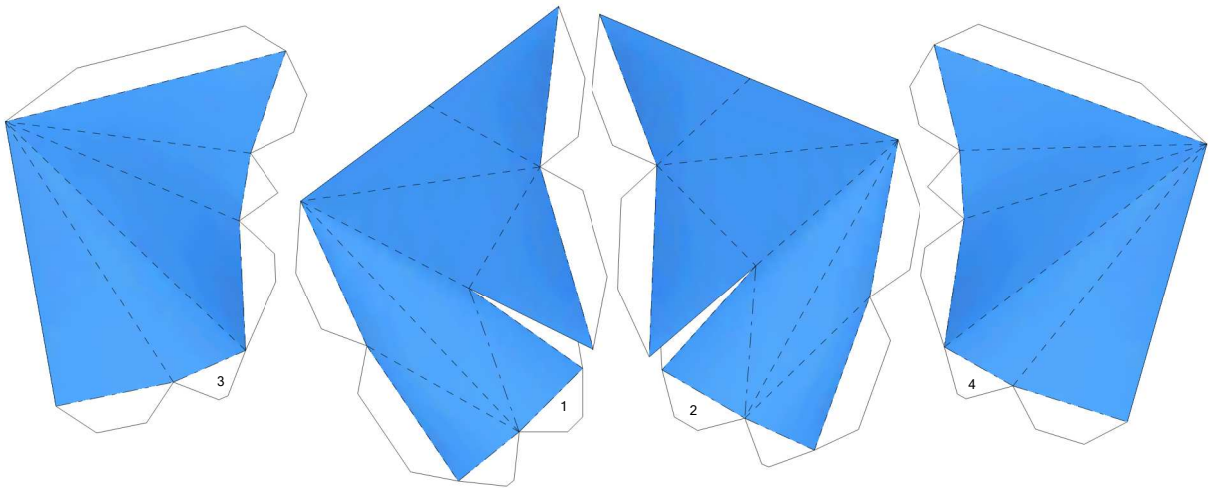


Golduck

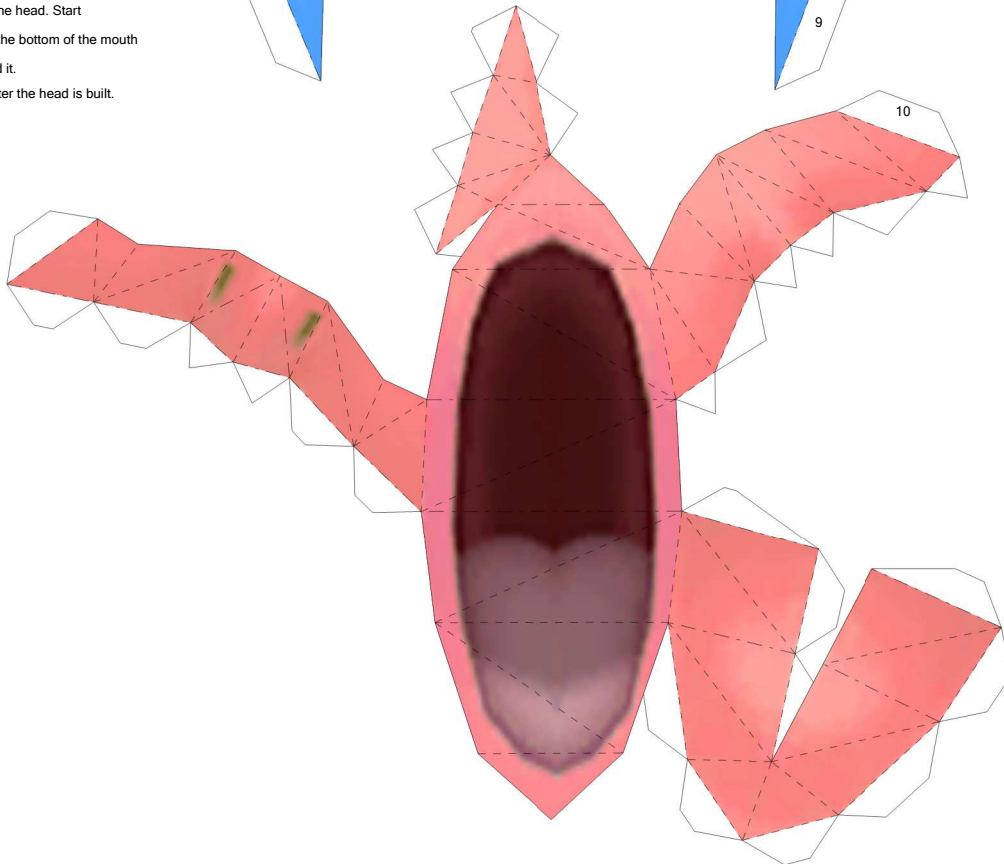
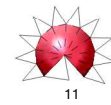
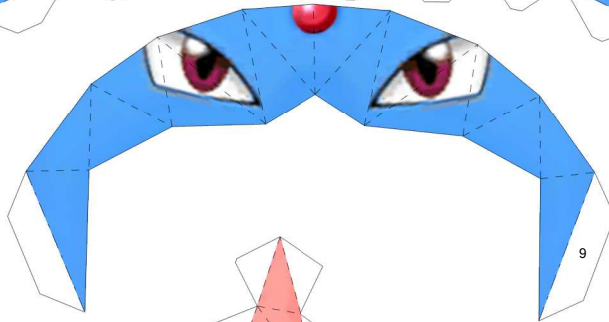
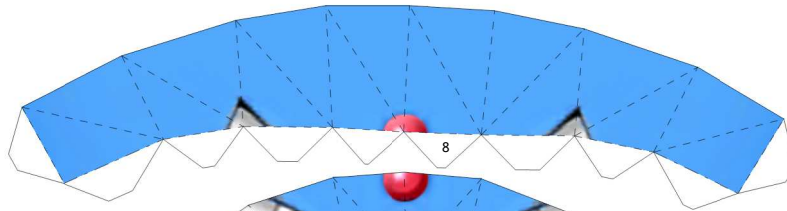
By Brandon

Build by Luis

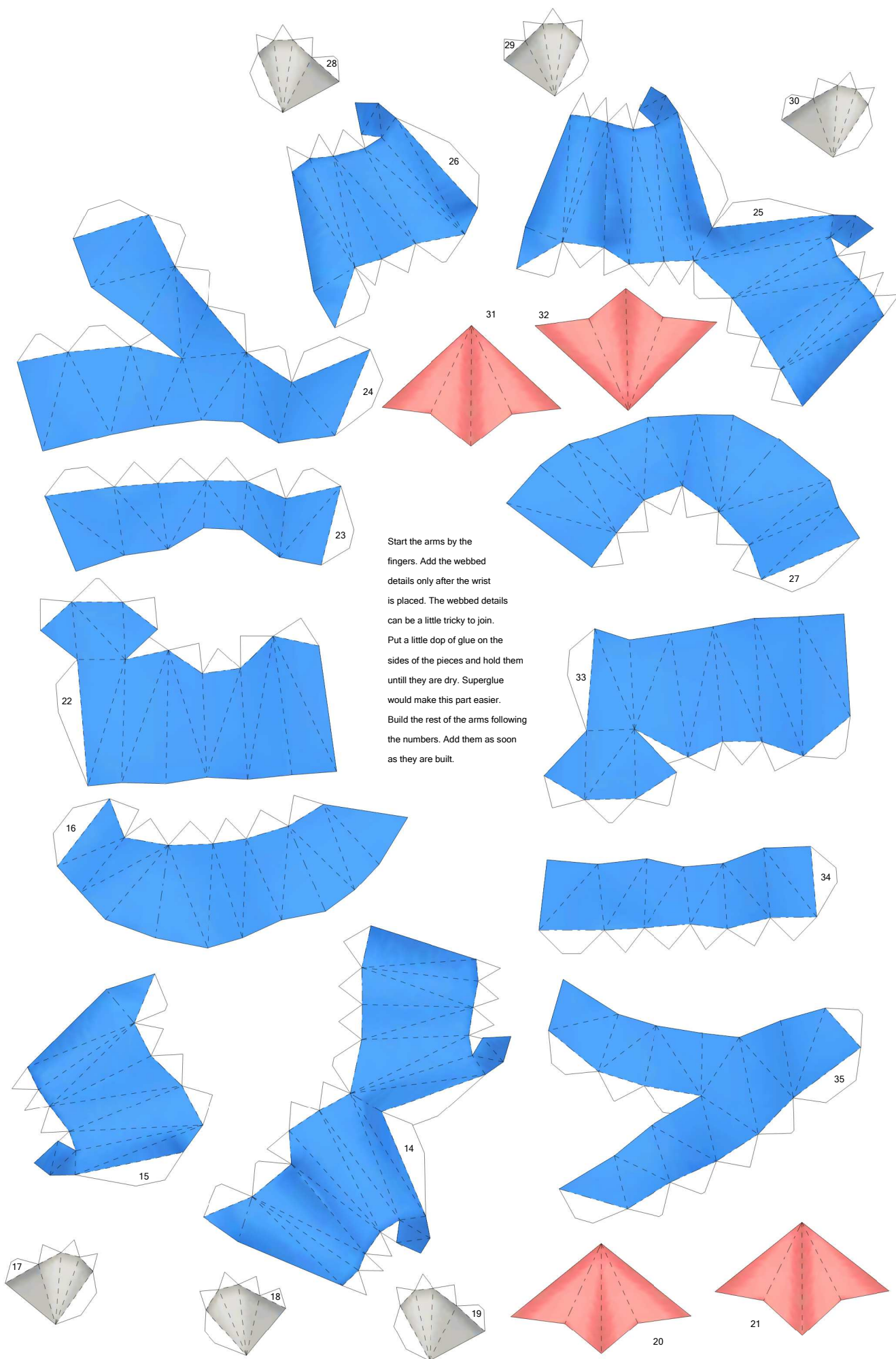
PaperPokés
www.pokemonpapercraft.net



This model is not really complex. The head spikes can offer some trouble as well as the hands, but even the trouble parts are really simple. Start the model by the spikes. Add them to piece 4 one by one following the numerical order. Build the face around it. Be careful with the mouth, start by the top, working from the tip up, after the top is built, build the bottom and join it with the rest of the head. Start joining them by the bottom of the mouth and work around it. Add the jewel after the head is built.

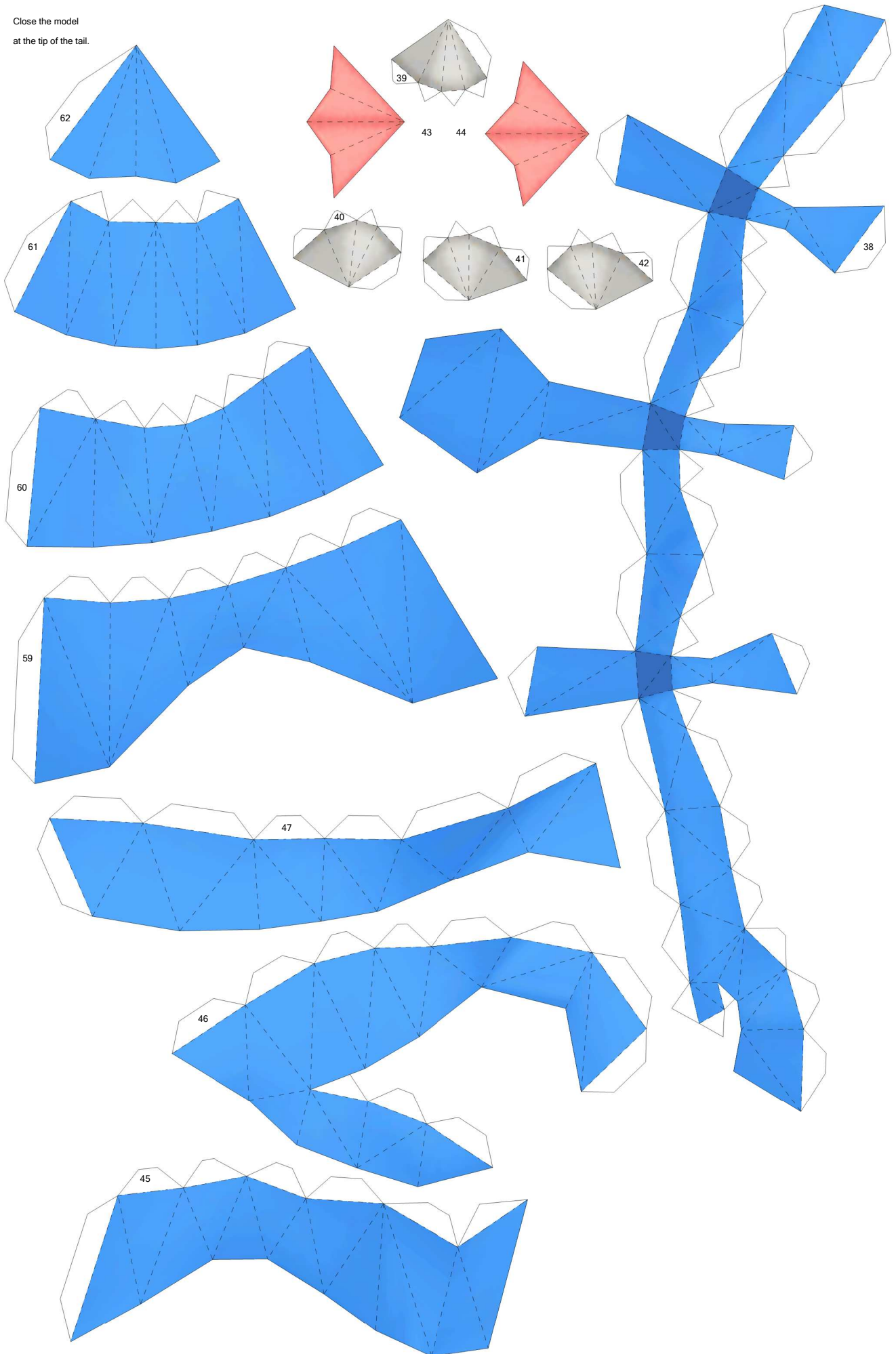


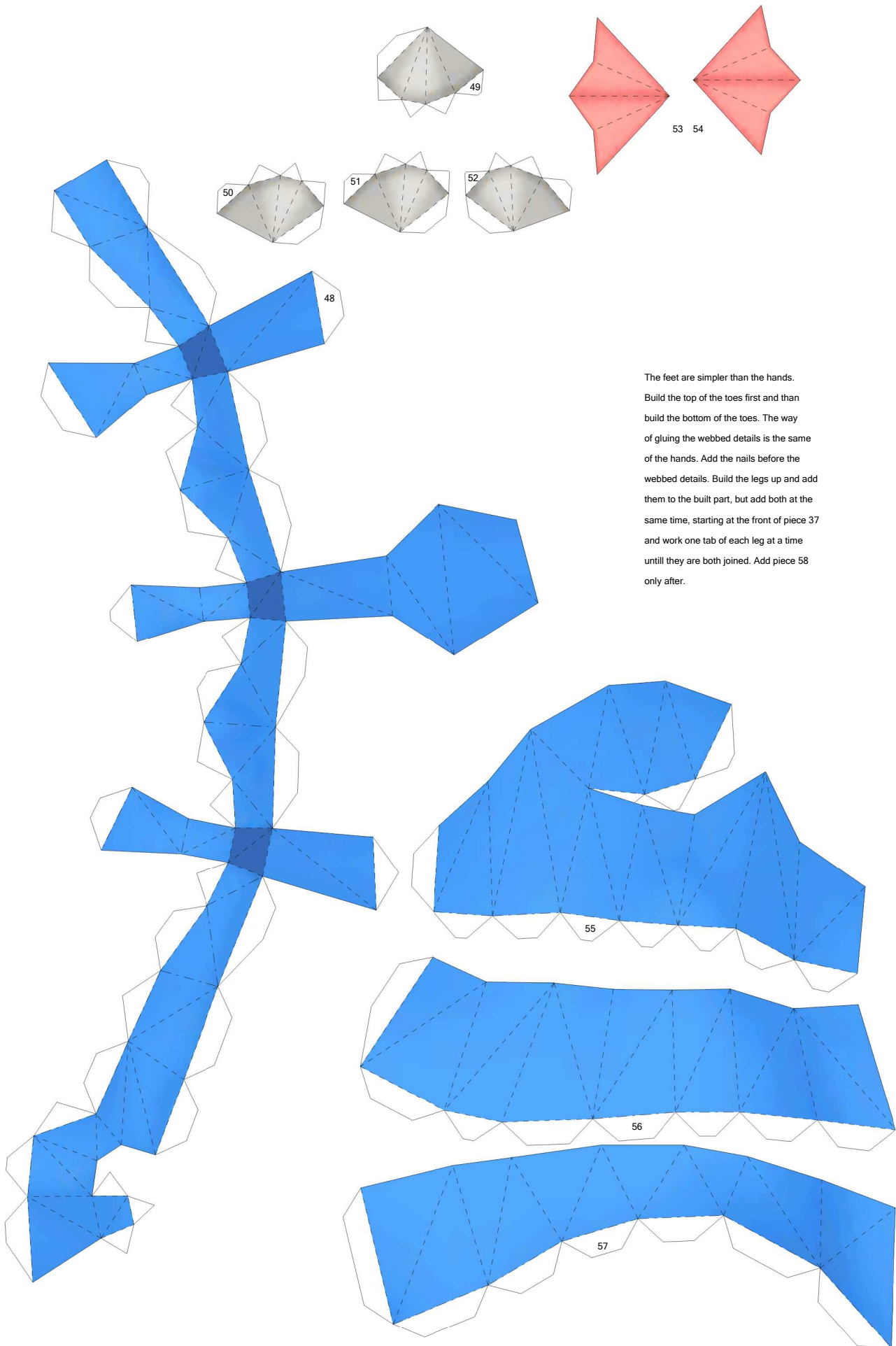




Start the arms by the fingers. Add the webbed details only after the wrist is placed. The webbed details can be a little tricky to join. Put a little drop of glue on the sides of the pieces and hold them until they are dry. Superglue would make this part easier. Build the rest of the arms following the numbers. Add them as soon as they are built.

Close the model
at the tip of the tail.





The feet are simpler than the hands.
 Build the top of the toes first and then
 build the bottom of the toes. The way
 of gluing the webbed details is the same
 of the hands. Add the nails before the
 webbed details. Build the legs up and add
 them to the built part, but add both at the
 same time, starting at the front of piece 37
 and work one tab of each leg at a time
 until they are both joined. Add piece 58
 only after.